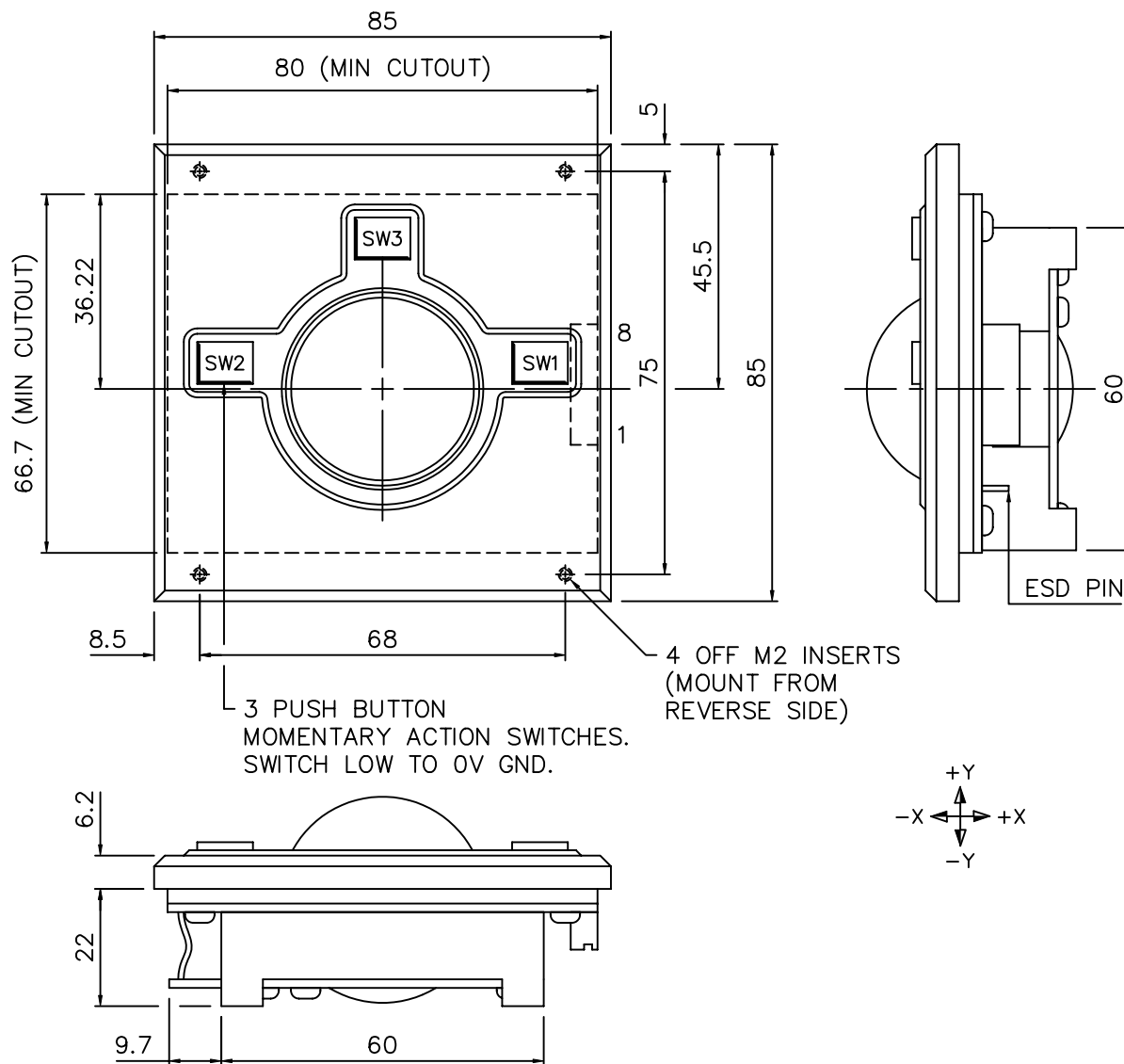


USED ON

D or  
CAT.No

M.A./S.A.




SPECIFICATION

BALL ~ Ø1.5" COLOUR: BLACK.  
TOP PLATE ~ A.B.S, COLOUR: DARK GREY.  
TOP RING ~ P.T.F.E. BALL SEAL/RESTRAINING RING.  
RESOLUTION ~ 800 EDGES/REVOLUTION.  
CONNECTOR ~ 8 WAY LP MOLEX HEADER,  
5483 SERIES.  
SUPPLY ~ +5V D.C ±5% @ 50mA MAX.  
OUTPUT ~ UNIT WILL AUTODETECT TO EITHER PS2  
OR USB DEPENDENT ON HOST.

CONNECTION DETAILS

PIN	DESCRIPTION
1	N/C
2	N/C
3	N/C
4	N/C
5	+ DATA/CLOCK (USB/PS2)
6	- DATA/DATA (USB/PS2)
7	+5V D.C
8	0V GND

APP. <i>[Signature]</i>	MATERIAL -	FINISH -	TOL. ±0.5	SCALE 1:1	ISSUE	A	1	1A	1B	2	3	3A
CHKD. <i>[Signature]</i>				DIMNS MM	DATE	21.5.01	24.1.02	20.8.03	03.11.03	16.2.04	1.12.04	22.6.06
DRAWN R.HARNETT	 <p>Esterline Corporation. Ringwood, Hampshire. BH24 1EU. Tel: +44 (0) 1425 463100 Fax: +44 (0) 1425 463111 www.traxsys.com</p>				TITLE	DRAWING NUMBER						
					PROTECTED MINIATURE TRACKERBALL WITH 3 INTEGRAL SWITCHES THROUGH PANEL MOUNTING	SIZE A3	DS509174					